

How to: Use Telstra Turbo Modem on Microsoft Windows Vista

Release: Public

Release Date: 27th April 2007

Objective:

Provide a guide to configuring and using a Maxon MiniMax (Telstra Turbo Modem™ and Bigpond USB Mobile Card) on Microsoft Windows Vista.

Contents:

- 1) Requirements
- 2) Installation / Use
- 3) Support

1) Requirements

This guide is written for Maxon’s MiniMax (USB Next G modem). You must have a modem with firmware version R1.1.49 (current release), and the Telstra Turbo Modem Manager version 1.1.0. This guide is for Microsoft Windows Vista (official current release). It was created and tested using Ultimate version. Please note the current drivers are 32 bit only and therefore will not work with 64 bit Operating systems.

You can download the Telstra Turbo Modem Manager v1.1.0 from here <http://www.maxon.com.au/downloads.php?p=1>

Please READ EVERY STEP in this guide.

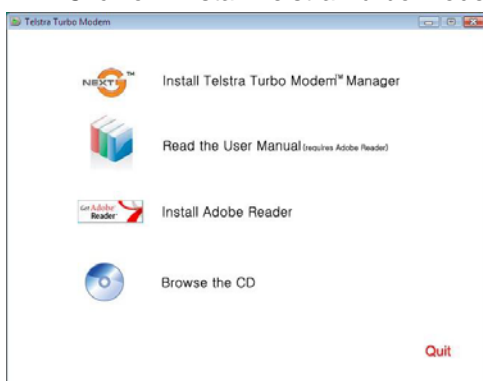
IMPORTANT NOTE: this procedure is only a stop gap procedure until we release compatible software/drivers. **ONLY attempt this installation if you are willing to accept all consequences, are a competent computer user, and understand that Maxon Australia may refuse you further support.**

2) Installation

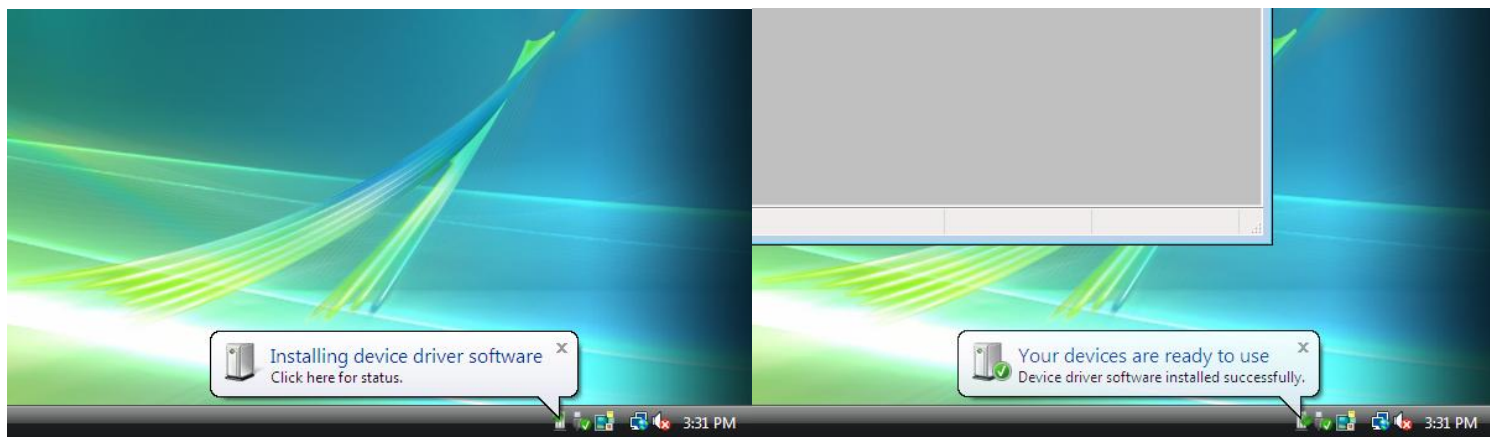
- ⌘ Insert the CD (Telstra Turbo Modem Manager), or run install.exe if you have downloaded the software



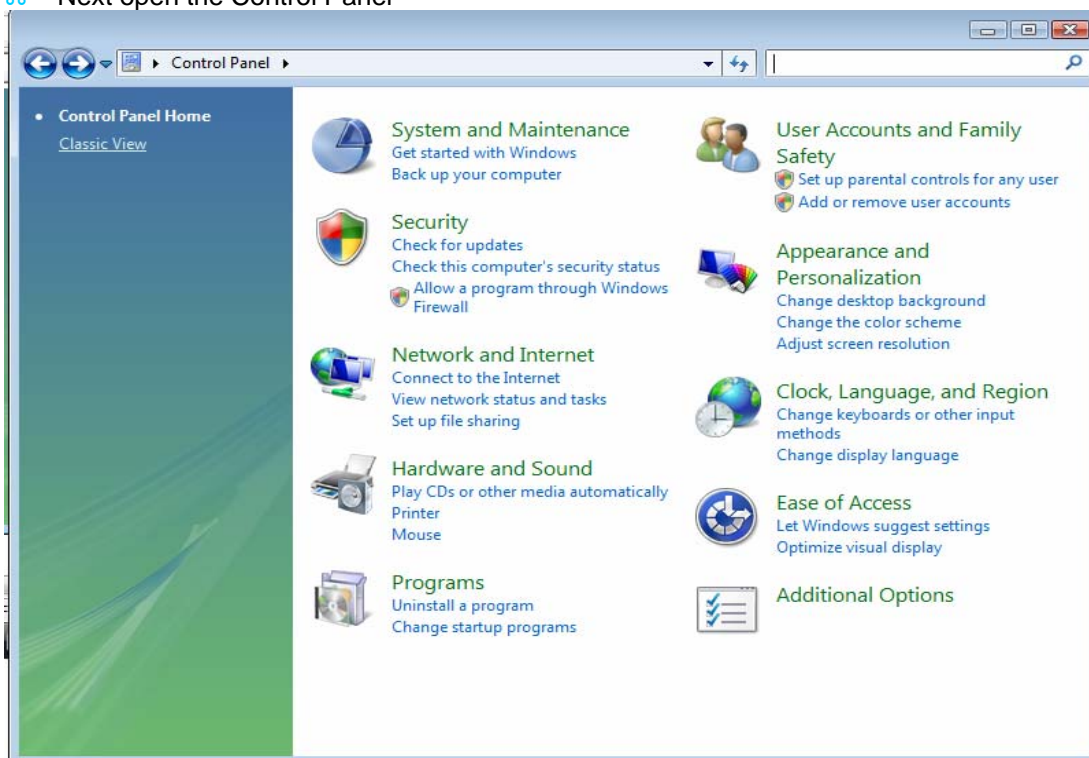
- ⌘ Click on “Install Telstra Turbo Modem™ Manager”



- ⌘ Follow the installation instructions as per the user guide (also available for download at the above links)
 - Next Disable the “sim pin request” on the sim card **YOU MUST DO THIS!**
 - First remove the sim card from the modem and insert in a mobile phone; you will then need to navigate through the menus looking for an option to disable the pin request (or similar depending on the model of phone). This is usually under the “security settings” but once again this does vary.
 - Once you have done this verify that it is disabled by switching phone on and off to make sure you aren’t asked for the PIN
- ⌘ Insert the MODEM after the installation has completed.
- ⌘ You should see a box informing you that the driver is being installed, and then a box informing you it has been successfully installed.

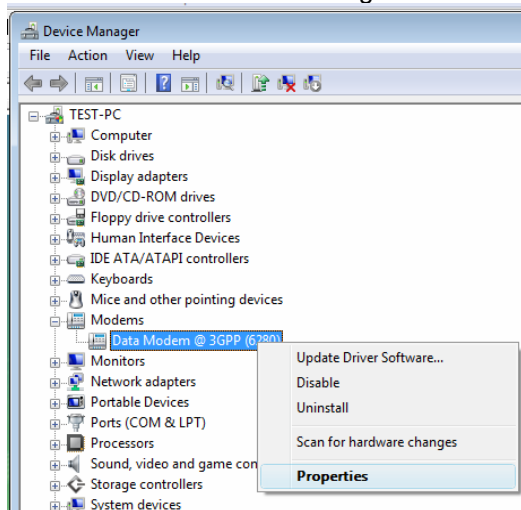


- ⌘ Next open the Control Panel

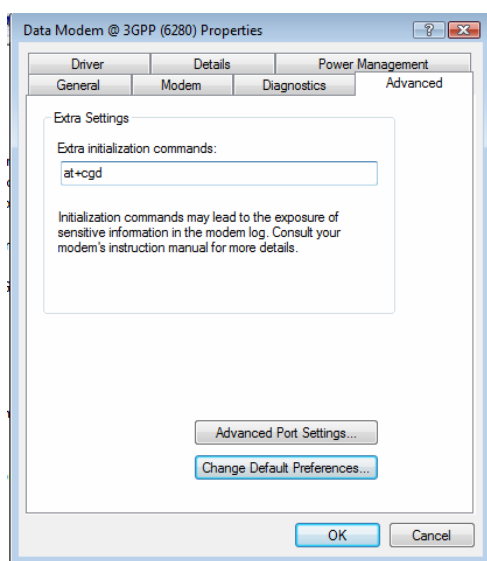


- ⌘ Select Hardware and sound then Click on “Device Manager”

- ☞ Scroll down to modems and right click on “Data Modem @3GPP”



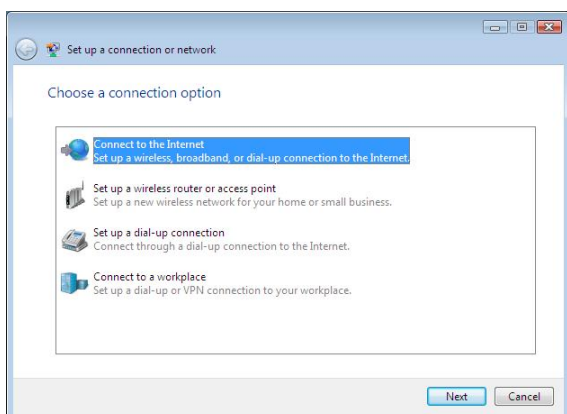
- ☞ Select properties and then the ‘Advanced’ TAB



- ☞ Under extra initialization commands enter:

at+cgdcont=1, "i p", "tel stra. datapack" if you are on a data based plan e.g pay for 200mb or
at+cgdcont=1, "i p", "tel stra. pcpack" if you are on a time based plan or
at+cgdcont=1, "i p", "tel stra. internet" if you are on a data based casual plan or
at+cgdcont=1, "i p", "tel stra. bi gpond" if you are on a Bigpond plan

- ☞ Click ok and close the “Device manager”
- ☞ Now make sure you are in the control panel
- ☞ Click “Network and Internet” then “Network & Sharing Center”
- ☞ Click “Setup a connection or network” on the left
- ☞ Select “ Connect to the internet”



⌘ Click “Dial-up”



- ⌘ If prompted to select a modem, chose “Data Modem @3GPP”
- ⌘ Enter the connection details:
 - Phone number: *99# (star 99 hash)
 - Username/password: If you have a Telstra Turbo Modem, leave these fields blank.
 - Username/password: If you have a Bigpond modem, use your provided username / password
- ⌘ You are now ready to connect! - For future connections, use this connection method, rather than the Telstra Turbo Modem™ Manager.
- ⌘ Remember to DISCONNECT when you have finished using the connection.

3) Support

Maxon Australia releases this information for you to install the modem yourself. At this stage we do NOT provide official support for Windows Vista. Note that Bigpond does not provide official support for Vista and the USB modems yet either.

ONLY attempt this installation if you are willing to accept all consequences, are a competent computer user, and understand that Maxon Australia may refuse you further support.