

ONE WORLD ONE MODULE

Utilising the superior technology of Huawei, Maxon's HSPA mini PCI Express Module (EM-770W) offers a competitively priced, feature rich wireless solution for developers and integrators who want to energise their data telemetry devices within the M2M market

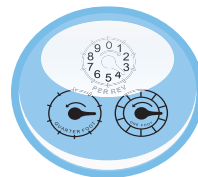
...WHATEVER YOUR APPLICATION...WHEREVER YOUR MARKET...
...WHENEVER YOU'RE READY...

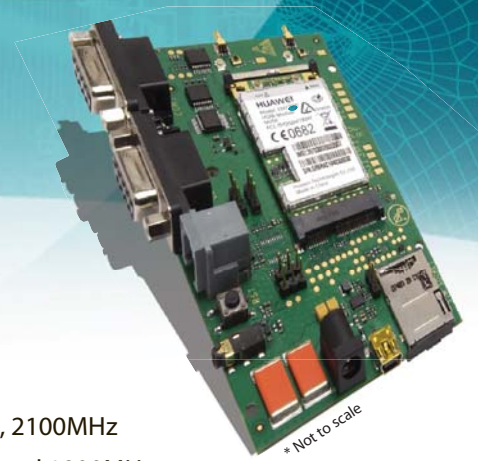
INTELIMAX can transform your hardware devices into powerful wireless data solutions. Enabling developers and integrators to gain access to the growing telemetry data/SMS market.



Intelimax Features

- Quad Band HSPA
- Quad Band GSM/GPRS/EDGE
- PCI Express Mini Card
- MSM6290 Qualcomm Chipset
- Receive Diversity
- Supports Packet and Circuit Switched data.
- Embedded TCP/IP, UDP/IP STACK
- 7.2Mbps Downlink, 2Mbps Uplink
- Maxon Online Developers Forum





Frequency Bands

- WCDMA/HSPA 850MHz, 900MHz, 1900MHz, 2100MHz
- GSM/GPRS/EDGE 850MHz, 900MHz, 1800MHz and 1900MHz



Metering



Rail



Road Signs



Security



Transport



Vending Machines

Hardware Specification

- Input Voltage Range: 3.0 ~ 3.6 V (Typical 3.3V)
- USIM/SIM: Supports SIM/USIM, 3V/1.8V SIM card
- 52 pin Edge Connector
(Pin out supports PCI-Express Mini Card Specification)

Dimensions:

- Dimensions: 51mm×30mm×5mm
- Weight: < 50g

Data

- HSPA: 2.0 Mbps UL,
DL 7.2 Mbps
- WCDMA PS: UL 384 Kbps/DL 384 Kbps
- WCDMA CS: UL 64 Kbps/DL 64 Kbps
- GPRS/EDGE: UL 236 Kbps/DL 236 Kbps
- GSM CS: UL 9.6 Kbps/DL 9.6 Kbps

Connections

- USB 2.0 Interface
- UART (TTL Serial Interface)
- Antenna interface: Hirose U.FL-R-SMT connector

Approvals

- FCC
 - GCF
 - PTCRB
 - CE
 - ACA
 - Carrier Approvals*
- * Contact Maxon Australia for further information about Carrier Approvals.

Environmental Specifications:

- Normal Operating Temperature: -10 to 65° C
- Extreme Operating Temperature: -20 to 70° C
- Storage Temperature: -40 to 90° C
- Humidity: 5% ~ 95%

Compliance

- RoHS Compliant

Operating System:

- Microsoft Windows, Mac OS, Linux, Win CE

