

CHOOSE WELL...
CHOOSE WISELY...
CHOOSE MAXON...

NEED VERSATILITY, DEPENDABILITY, CAPABILITY, COMPATIBILITY. THINK INTERMAX.

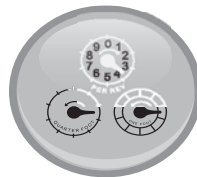
Simplicity itself, the Intermax provides users with a very cost effective means of adding 3G connectivity to a telemetry application. At the heart of the Intermax is the superior technology of Huawei Quad Band Mini PCI Express Module that can power your application world wide.

No matter where it is deployed, Intermax is the modem of choice when you need to deliver critical application data fast. Intermax's HSPA technology ensure broadband speeds in a robust feature-rich device designed to do the job and do it right.



Intermax Features

- Quad Band HSPA
- Quad Band GSM/GPRS/EDGE
- Embedded TCP/IP, UDP/IP STACK
- Supports Packet and Circuit Switch Data
- 7.2Mbps Downlink, 2Mbps Uplink
- RS232 Serial & USB Connectivity
- Driven by our Intelimax Mini PCI Express Module
Product Code: EM770W PCI





Metering



Rail



Road Signs



Security



Transport



Vending Machines

Frequency Bands

- WCDMA/HSPA 850MHz, 900MHz, 1900MHz, 2100MHz
- GSM/GPRS/EDGE 850MHz, 900MHz, 1800MHz and 1900MHz

General Features

- SIM Application toolkit
- Small and rugged form factor
- USB 2.0 connection
- Packet & Circuit Switched Data
- 2 Way SMS
- Remote SMS diagnostics & reset
- Embedded TCP/IP, UDP/IP STACK
- Extended AT command set
- In-built periodic reset
- MSM6290 Chipset
- USB Powered or External DC Powered

Dimensions

- 76.5mm x 61mm x 26mm (without side brackets and antenna)

Connections

- RS232 Connection: RJ45 8 pin contact. (Pin 1 used as power).
- SIM Card holder
- Mini USB connector
- Antenna connector: FME male

Mounting

- DIN Rail mount option
- Removable side mounting brackets.

LED

- Red – Power
- Blue – RSSI/Data

Data

- HSPA: 2.0 Mbps UL, DL 7.2 Mbps
- WCDMA PS: UL 384 Kbps/DL 384 Kbps
- WCDMA CS: UL 64 Kbps/DL 64 Kbps
- GPRS/EDGE: UL 236 Kbps / DL 236 Kbps
- GSM CS: UL 9.6 Kbps/DL 9.6 Kbps

Approvals

- GCF
 - CE
 - Carrier Approvals*
 - PTCRB
 - FCC
 - ACA
- * Contact Maxon Australia for further information about Carrier Approvals.

Environmental Specifications

- Normal Operation Temperature -10 to 65° C
- Extreme Operation Temperature -20 to 70° C
- Storage Temperature -40 to 90° C
- Humidity 5% ~ 95%

Compliance

- RoHS Compliant

Operating Systems

- Microsoft Windows, Mac OS, Linux, Win CE

Power

- DC Input Voltage Range: 5 to 34 VDC
- Idle Current @ 12V: 30mA
- Maximum Current @ 12V: 200mA

