

CHOOSE WELL...
 CHOOSE WISELY...
 CHOOSE MAXON...

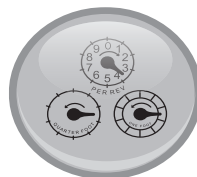
CONTROL & MONITOR REMOTE APPLICATIONS

The SD-170 Series of RF wireless modems from Maxon utilise the latest technology in its design and manufacturing. Both the UHF and VHF models are Phase Lock Loop Synthesizer (PLL) / microprocessor controlled and offer one to five watts of power with 16-channel capability. Multiple functions including 1200 to 9600 baud rates, AC and/or DC audio coupling, GMSK, FFSK and FSK modulation are standard in these fully programmable wide bandwidth RF wireless modem units. Programmable sub-audio squelch system (CTCSS & DCS) and two-tone squelch system are newly added to the signal level detect squelch system (RSSI). GPS Data handling is provided to interface and control internal GPS receiver.



SD-170 Series Features

- SD-170 Series: 1-5 Watts RF TX Power
- TX Delay
- CTCSS/DCS tone signaling
- Marked Idle
- 2-tone decode
- LED Status indicator
- 16 Channel
- Busy Channel lock-out
- Scan
- Optional GPS add-on
- Time-out timer
- Power save
- Courtesy Beep



RFDData | SD-170

Synthesised Data Module



Metering



Rail



Road Signs



Security



Transport



Vending Machines

Technical Specifications

	VHF	UHF
• Equipment Type:	Data Radio (Wireless Modem)	Data Radio (Wireless Modem)
	SD-171	SD-174
• Performance Specs:	ETS 300-113	ETS 300-113
• Frequency Range:	148-174MHz	450-490MHz
• RF Output:	1-5W	1-5W
<ul style="list-style-type: none"> • Channel Spacing: 12.5MHz or 25.0Khz Programmable • Modulation Type: F3D, F3E • Intermediate Frequency: 451MHz & 455Mhz • Number of Channels: 16 • Frequency Source: Synthesizer • Operation Rating: Intermittent90 : 5 : 5 (Standby : RX : TX) • Power Supply: Ext. Power Supply (12VDC Nominal) • Temperature Range: <ul style="list-style-type: none"> Storage: From -40C to +80C Operating: From -30C to +60C • Current Consumption: <ul style="list-style-type: none"> Standby (muted): <65mA Transmit 5Watts: <2.0 A Transmit 2Watts: <1.0 A • Lock Time: <10ms • TX to RX attack time: <20ms (No Power Saving) • RX to TX attack time: <20 ms • Dimensions: (32mm) H x (58mm)W x (125mm)D • Weight: 253 grams 		

Accessories:

- Individual Programming Cable (Product Code: ACC-2016)
- GMSK Modem (Product Code: ACC-513)
- FFSK Modem (Product Code: ACC-514)
- GPS Module (Product Code: ACC-515)
- GPS Antenna (Product Code: ACC-160)
- PCB Extension Board (Product Code: ACC-516)

