

Telstra Turbo Modem Mac OS Firmware Update Guide



THIS IS AN INTERIM PROCESS DOCUMENT DESIGNED TO GUIDE USERS WHO WISH TO USE A TELSTRA TURBO MODEM™ ON AN APPLE MAC COMPUTER AFTER RUNNING THE 7.2MBPS FIRMWARE UPGRADE. MAC COMPATIBLE FIRMWARE UPDATE SOFTWARE WILL BE AVAILABLE SHORTLY.

Important notices

- ⌘ To carry out this update you will require a computer with Microsoft Windows® installed.
- ⌘ We **recommend** that you always use the supplied USB cable to connect your modem the computer.
- ⌘ Read all documentation relating to upgrading the firmware on Windows.

Requirements:

- ⌘ Mac computer (Intel or PowerPC architecture)
- ⌘ Mac OS 10.3.9 (PPC only) or 10.4+ (we recommend 10.4.9) with the latest Telstra Turbo Modem Manager™ installed (as of 25-10-2007 this is Beta 3)
- ⌘ A spare USB port.
- ⌘ Computer running Microsoft Windows XP or Vista

Table of Contents

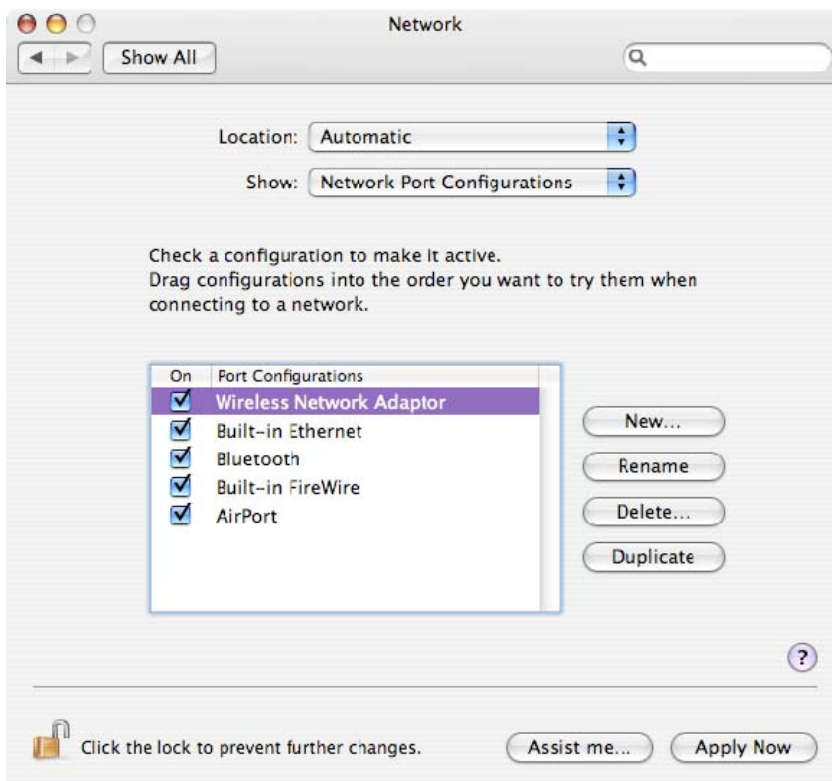
Table of Contents.....	1
1. Upgrading the firmware	2
2. Working on Mac OS	2

1. Upgrading the firmware

- ⌘ On a computer running Microsoft Windows® download the firmware update file (available from here: <http://www.telstra.com.au/business/help/downloads.htm#13>)
- ⌘ Follow the instructions on that site to upgrade the firmware of your modem to version R2.0.18 (7.2mbps upgrade)
- ⌘ Follow the instructions to install the latest version of the Telstra Turbo Modem™ Manager (version 2)
- ⌘ Once the software is installed correctly, plug the modem in to the Windows computer, and connect it to the internet via the Telstra Turbo Modem™ Manager. Disconnect it and proceed part 2.

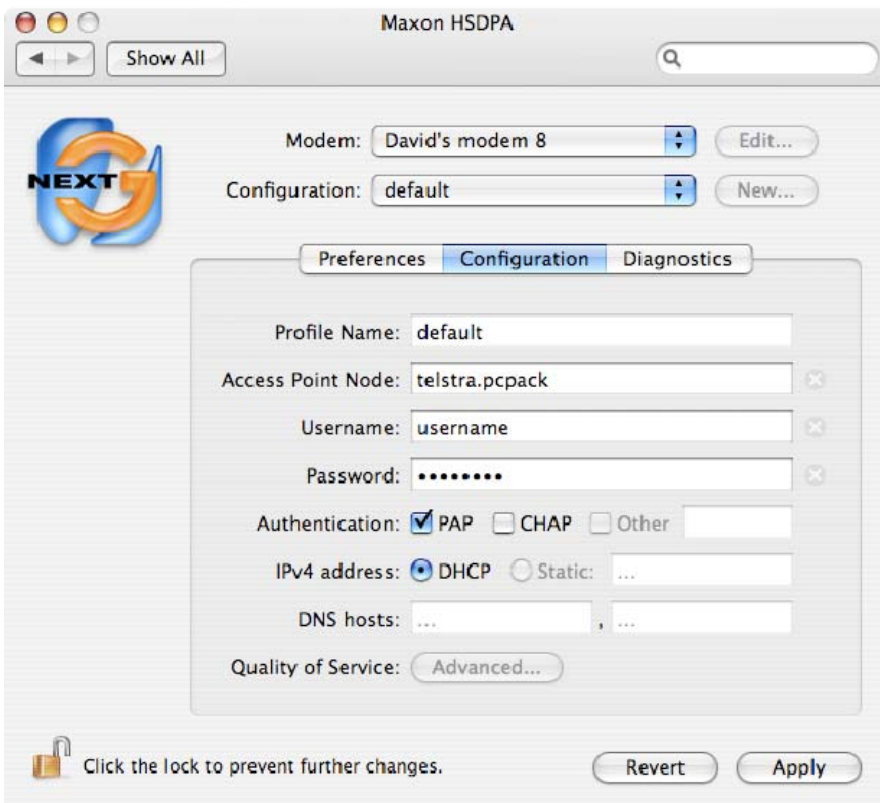
2. Working on Mac OS

- ⌘ You MUST have BETA 3 installed. You can download Beta 3 from here <http://www.maxon.com.au/downloads.php?p=1>)
- ⌘ Connect your modem to the Mac computer. Double check that the “Wireless Network Adaptor” is listed and ticked in “System Preferences”->”Network”->”Network Port Configurations”



- ⌘ Open “System Preferences”->”HSDPA”
- ⌘ In the “Configuration” drop down box select “default” and click on the “Configuration” tab.

- ⌘ You now need to **CHANGE** the “Access Point Node” (this will force the software to re-write the profile to the modem).
- ⌘ If the APN says “telstra.datapack” change it to “telstra.pcpack” (without the quotation marks)
- ⌘ If the APN says “telstra.pcpack” change it to “telstra.datapack” (without the quotation marks)
- ⌘ Enter the words “username” and “password” for the username/password then click “apply”. If you now check in the diagnostics tab, you should see that the information has been written to the modem.



- ⌘ Your modem should now work successfully.