








# Windows 7 Compatible Devices

# Software Installation Guide

Version 1.0  
Release Date 17.11.09

## Compatible Device List

Product Code:	Product Description	Product Image
USB-6280U	Minimax	
BP3-USB (Bigpond)	BP3 Series USB Modem	
USB3-8521 (Telstra)	Telstra Next G Turbo Modem	
BP3-EXT (Bigpond)	BP3-EXT Wireless Modem	
MM-6280IND or MM-6280L	Modmax HSDPA Industrial Router  - USB Connection only-	

## Contents

---

<b>1</b>	<b>Windows 7 Compatible Devices .....</b>	<b>4</b>
1.1	Compatible Devices .....	4
1.2	Requirements .....	4
<b>2</b>	<b>Software .....</b>	<b>4</b>
2.1	Installation .....	4
2.2	Interface on Windows 7 .....	5
<b>3</b>	<b>Establishing Internet Connection.....</b>	<b>5</b>
<b>4</b>	<b>Technical support contact .....</b>	<b>6</b>

## 1 Windows 7 Compatible Devices

### 1.1 Compatible Devices

- USB3-8521
- USB-6280U
- BP3-EXT
- BP3-USB
- MODMAX (USB Only)

### 1.2 Requirements

#### **USB3-8521, USB-6280U, BP3-EXT, BP3-USB**

Software & Firmware for above mentioned devices can be downloaded from <http://maxon.com.au/downloads.php?p=1>

The file is in a .zip format and will provide you with two folders after unzipping i.e. Telstra Turbo Modem Manager Software and Firmware Upgrade folder.

Please note that firmware version for all the above mentioned devices must be updated to R2.0.18. Please contact Maxon Australia technical support on 02 8707 3000 for assistance in upgrading the firmware to the latest.

#### **Modmax**

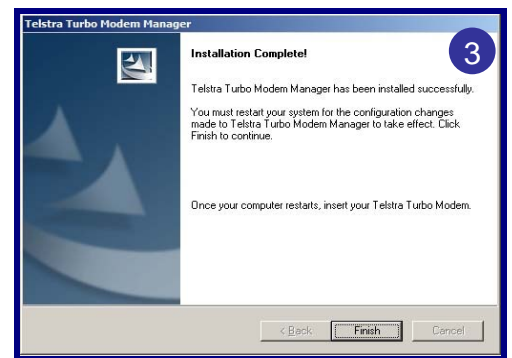
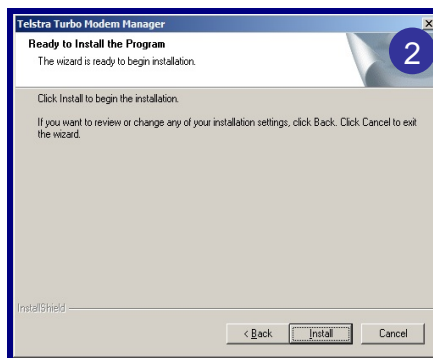
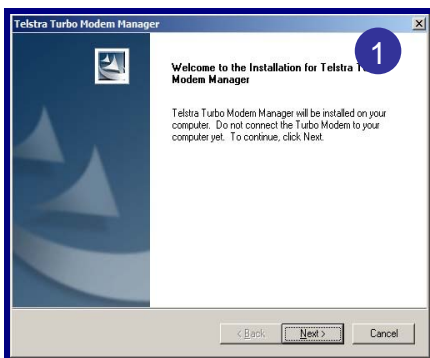
Software & Firmware for Modmax can be downloaded from <http://maxon.com.au/downloads.php?p=2>

Please note that firmware version for Modmax Modems must be R1.1.17 or above.

## 2 Software

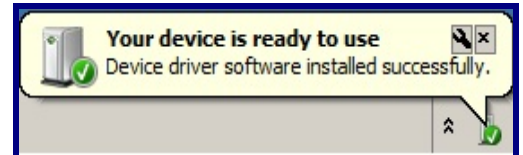
### 2.1 Installation

Run the Setup.exe file from the Telstra Turbo Modem Manager folder and click on Install to begin the installation process.

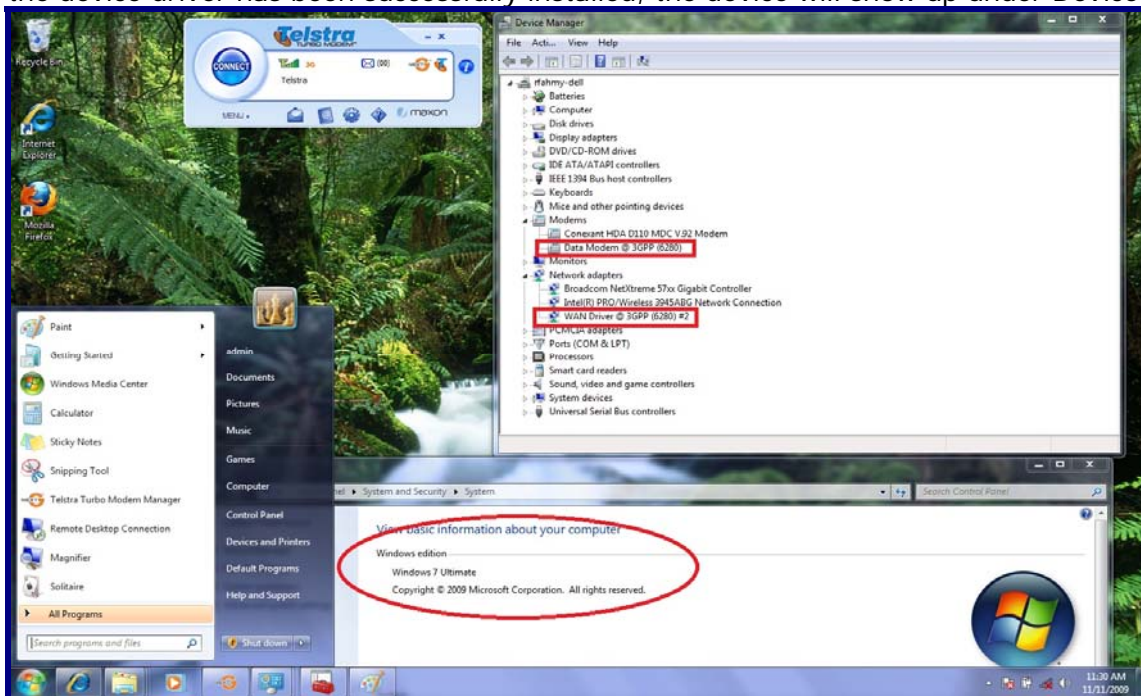


## 2.2 Interface on Windows 7

Once the installation is complete, a shortcut for the connection manager will be placed on the desktop. When the modem (USB3-8521, BP3-EXT, BP3-USB, Minimax or Modmax) is plugged in via the USB, you will be prompted with the following pop-up message:

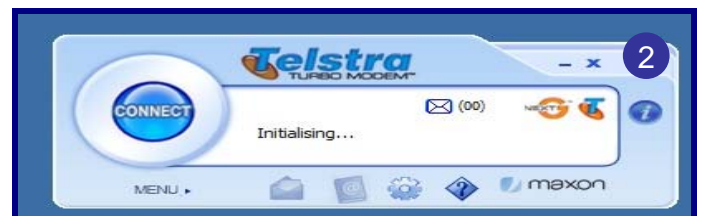
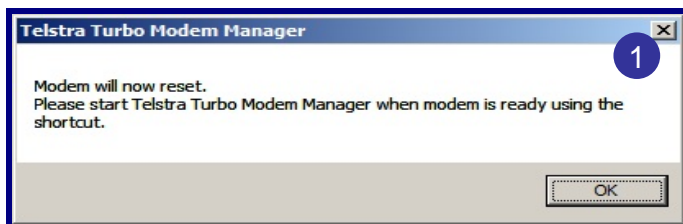


Once the device driver has been successfully installed, the device will show up under Device Manager.



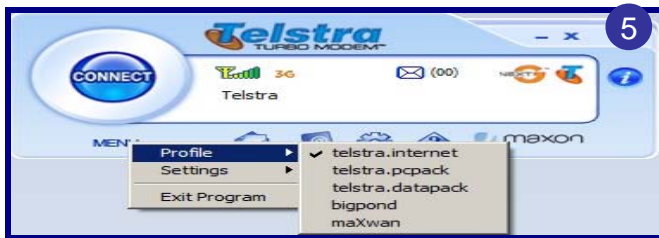
## 3 Establishing Internet Connection

Click on the Telstra Turbo Modem Manager shortcut on the desktop to start the connection manager.





If using Telstra SIM, select the appropriate APN by selecting MENU > Profile and click CONNECT. For all other network SIM please create a new profile by selecting MENU > Settings > Connection Manager > Create.



Modem is now connected to the Internet. Use the Disconnect button to disconnect current data session.



## 4 Technical support contact

Please contact Maxon Australia technical support team for further assistance with the installation of the above devices on windows 7 platform on:

Telephone: +61 2 8707 3000  
Email: [support@maxon.com.au](mailto:support@maxon.com.au)