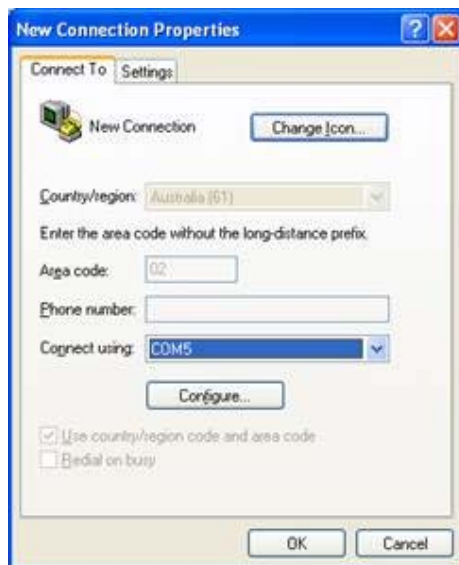


Connecting Modmax to Hyper Terminal

In this week's blog, we'll provide you with information on how to connect Modmax to the hyper terminal via a USB or Serial port.

Connecting Via the USB Port

1. Connect Modmax via the USB to a computer running Windows
2. To check Com Port assigned to Modmax, click on Start → Settings → Control Panel → System → Hardware → Device Manger
3. Under the device manager go to Modems, and double click the Data modem @3GPP
4. In the Data modem @3GPP Properties go to Advanced → Advanced Port Settings and make note of the Com port assigned
5. Click on Startup → All Programs → Accessories → Communications → and select HyperTerminal
6. Go to File → Properties → Connect Using and select the Com port used by the Data modem @3GPP

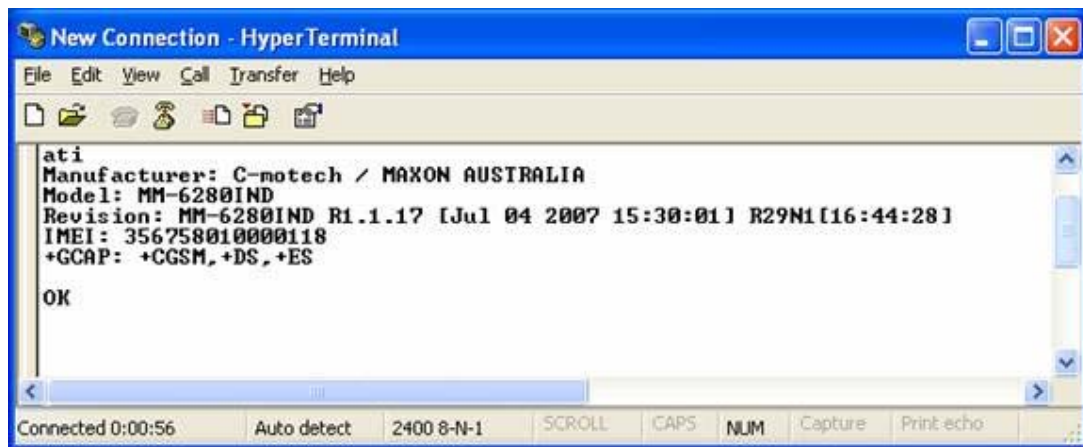


7. Press enter to connect.
8. By default the Echo is turned off, you have to type ATE1 to turn the echo on. When you type ATE1 you will not be able to see any output on the screen until you type them and Press Enter

Connecting Via the Serial Port

1. Connect Modmax via the Serial to a computer running Windows
2. The Serial port is usually Com 1. If you are not sure then go to Control Panel → System → Hardware → Device Manger → Ports (Com&LPT), you should be able to see Communication Port (COMPORTNUMBER), make note of the Com port assigned

3. Click on Startup → All Programs → Accessories → Communications → and select HyperTerminal
4. Go to File → Properties → Connect Using and select the Com port 1
5. Click on Configure and set the baud rate to 115200 (the default baud rate)
6. Press enter to connect
7. By default the Echo is turned off, you have to type ATE1 to turn the echo on. When you type ATE1 you will not be able to see any output on the screen until you type them and Press Enter

A screenshot of a HyperTerminal window titled 'New Connection - HyperTerminal'. The window has a menu bar with 'File', 'Edit', 'View', 'Call', 'Transfer', and 'Help'. Below the menu bar is a toolbar with icons for file operations and communication. The main text area displays the following AT command output:

```
ati
Manufacturer: C-motech / MAXON AUSTRALIA
Model: MM-6280IND
Revision: MM-6280IND R1.1.17 [Jul 04 2007 15:30:01] R29N1[16:44:28]
IMEI: 356758010000118
+GCAP: +CGSM,+DS,+ES

OK
```

The status bar at the bottom shows 'Connected 0:00:56', 'Auto detect', '2400 8-N-1', 'SCROLL', 'CAPS', 'NUM', 'Capture', and 'Print echo'.

For any further information, please contact Maxon Technical support team on +61 2 8707 3000 or email support@maxon.com.au