

CHOOSE WELL...
CHOOSE WISELY...
CHOOSE MAXON...

CONTROL AND COMMAND REMOTE APPLICATIONS WITH THIS ADVANCED INDUSTRIAL 3G HSPA ETHERNET ROUTER.

The evolved Unimax HSUPA Ethernet Router is driven by the superior technology of our Intelimax Engine taking your application to the next level. Maximise your wireless speed and capabilities over a wide area with 3G Connectivity for enhanced management of both remote industrial and M2M applications for complete control and command of your data.

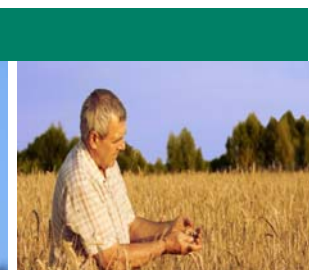
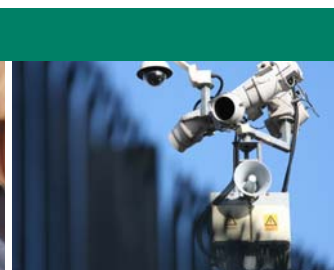
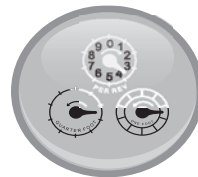
Universally deployable, the versatile Unimax is a must have for your wireless telemetry needs.



Unimax Features

- Quad Band HSPA
- Quad Band GSM/GPRS/EDGE
- Supports Packet Switched Data
- 7.2Mbps Downlink, 2Mbps Uplink
- Ethernet Connectivity
- Digital Inputs/Outputs
- Driven by our Intelimax Mini PCI Express Module

Product Code: EM770W PCI





Frequency Bands

- WCDMA/HSPA 850MHz, 900MHz, 1900MHz, 2100MHz
- GSM/GPRS/EDGE 850MHz, 900MHz, 1800MHz and 1900MHz



Metering



Rail



Road Signs



Security



Transport



Vending Machines

General Features

- Embedded Intelimax EM-770W (HSUPA/HSDPA/UMTS/GSM/GPRS/EDGE) module
- Rugged and Robust form factor
- Ethernet Connectivity
- PPPoE/Router (Automatic) WAN connection
- Programmable Back off WAN Connection Retries (Router mode)
- 2 Digital Outputs, 2 Digital Inputs
- DHCP Server / Client
- Web-based management, Telnet
- Supports VPN Pass-through, Client and Server mode.
- MAC address filtering
- Configuration backup and restoration
- NAT, Port forwarding, DMZ
- WAN Scheduler (Router Mode)
- Wide ranging input power
- Packet Switched Data
- In-built periodic reset

Data

- HSPA: 2.0 Mbps UL, DL 7.2 Mbps
- WCDMA PS: UL 384kbps/DL 384kbps
- GPRS/EDGE: UL 236 Kbps / DL 236 Kbps

Environmental Specifications

- Normal Operation Temperature -10 to 65° C
- Extreme Operation Temperature -20 to 70° C
- Storage Temperature -40 to 90° C
- Humidity: 5% ~ 95%

Dimensions

- 77.5mm x 122mm x 20.6mm (without external antenna)

Connections

- 1 X Ethernet Connection
- Power – Molex Connection
- SIM Card
- Digital I/O
- Antenna connector: FME male

Mounting

- Side mounting brackets.

LED

- Power
- Send / Receive Data
- Wireless Signal

Approvals

- GCF
- PTCRB
- CE
- FCC
- Carrier Approvals*
- ACA

* Contact Maxon Australia for further information about Carrier Approvals.

Compliance

- RoHS Compliant

Power

- 9 ~ 30 VDC (reverse polarity protection)
- Standby Current @ 12 VDC : under 250 mA
- Packet Data Connection Current @ 12 VDC : under 430 mA

